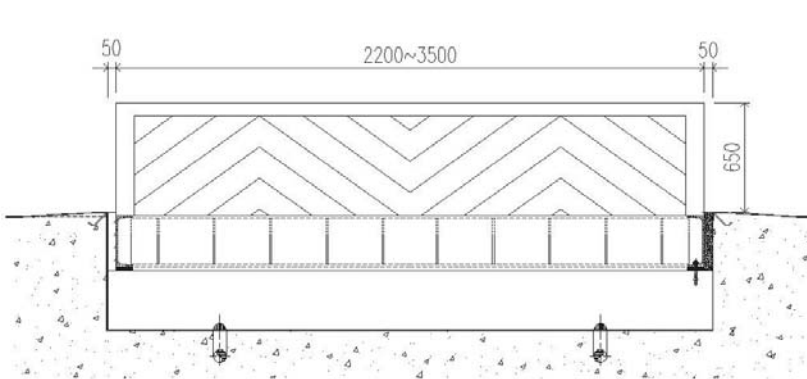


### CONTROLLER

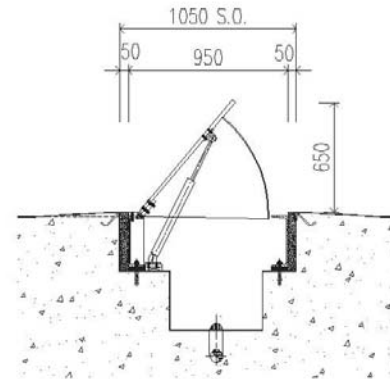
The controller provides interfacing from associated access control devices to activate the electrical road blocker. All inputs & outputs are controlled through a 24 volt control board with all necessary with most access control devices on the market.

### TECHNICAL DATA

- Height of raised obstacle: 350~650mm
- Length of obstacle: 2200mm - 3500mm (Optional length on request).
- Width of obstacle: 580mm
- Motor: Single Phase asynchronous type.  
1100W                      1420rpm.
- Power supply: 4000V                      Three phase                      50/60Hz
- Reduction gear box: Worm-screw type, life-lubricated, ratio of reduction 6:1
- Power consumption: In stand-by mode 200W  
In operation 1500W
- Operation temperature: -20 to 80 degree Celsius
- Net weight: 400 KG - 800KG.
- Operation speed: 3 sec.
- Overall dimensions: 3500mm



Front view



Side view

### OTHER MODELS



RB-150T - ELECTRICAL TEETH TYPE ROAD BLOCKER



RB-160BF - ELECTRICAL ROAD BLOCKER

